

# M-CRANE

CRAWLER CARRIER

1030 RT



 **MultiLoader**USA

# M-CRANE

## 1030 RT

**FULL  
ELECTRIC  
DRIVE**

The M-Crane 1030 RT is a powerful and versatile crawler carrier equipped with a 1950 lbs maximum capacity Crane. With a ground clearance of a good 7", can be used in various heavy-duty applications both indoors and outdoors. Full electric drive, it has class-leading electric drive with two super quiet AC electric motors 5.3 kW each (rated IP67), and features three power management configurations:

- ECO - 0.8 mph
- STD - 1 mph
- POW - 2.6 mph

Autonomy Autonomia	Load		
	0 Lbs	3306 Lbs	Max Speed
<b>ECO</b>	~2.2 mph	~1.9 mph	0.8 mph
<b>STD</b>	~1.9 mph	~1.6 mph	1 mph
<b>POW</b>	~1.7 mph	~1.2 mph	2.6 mph



**WINCH KIT**  
OPTIONAL

**LATERAL POTHOLES**  
OPTIONAL



max  
1950 lbs

Equipped with a telescopic crane, it has a maximum lifting capacity of 1950 lbs and a variable outreach that can be used on slopes up to +/-10° longitudinal and +/- 5° lateral. The M-Crane 1030 RT, with a maximum capacity of 3300 lbs, can handle a wide range of loads, making it a versatile solution for a variety of material handling needs.

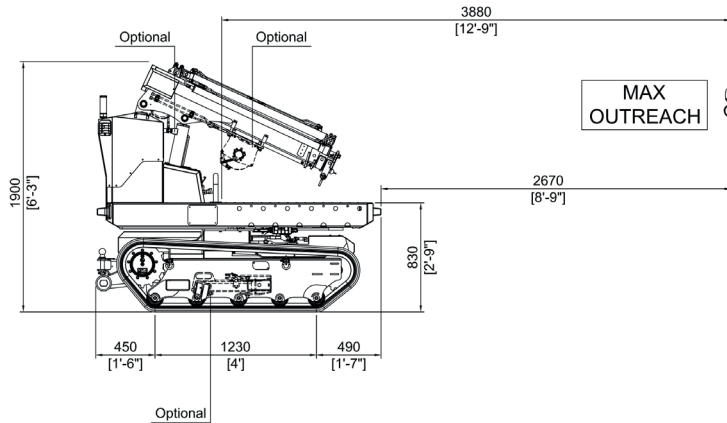
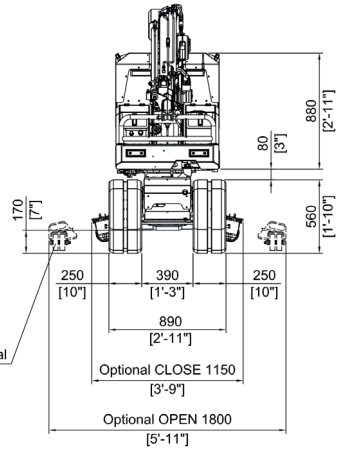
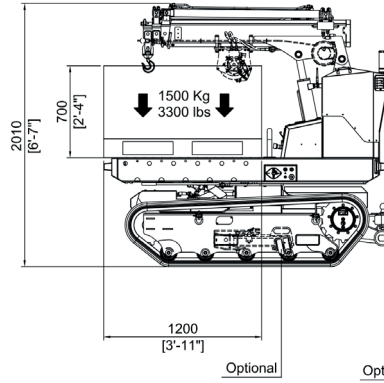
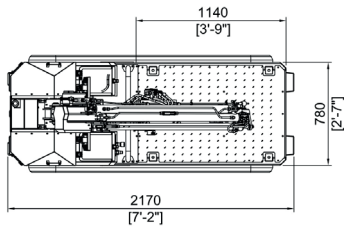


max  
3300 lbs



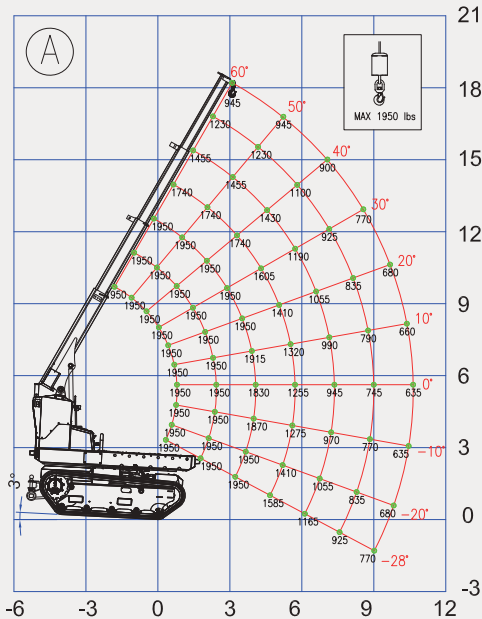
Technical data	ELC
Max Capacity	<b>3300 lbs (&lt;25°)</b>
Max Capacity Crane	<b>1950 lbs</b>
Max. longitudinal gradient in translation	+/-22°
Max. lateral gradient in translation	+/-10°
Max. longitudinal gradient in Crane use	+/-10°
Max. lateral gradient in Crane use	+/-5°
Width	<b>2.92 ft</b>
Length	<b>7.12 ft</b>
Height	<b>6.23 ft</b>
Track length	<b>4 ft</b>
Track width	<b>0.82 ft</b>
Ground clearance	<b>0.56 ft</b>
Platform ground height	<b>2.72 ft</b>
Max speed	<b>2.6 mph</b>
Power of electric motors	10,6 kW
Voltage	48 V
Battery pack (180Ah)	AGM
Charger Input & Time (110V–230V)	32A 48V / 9h
Ingress Protection IP	IP67
Controller	Remote radio control
Electric Pump for Crane and AUX	48V - 4.5KW
Tow Hook	Standard
Rear pothole	Standard
Lateral potholes	Optional
Non-marking tracks	Optional
Winch KIT	Optional
Work lights	Optional
Total weight	<b>4409 lbs</b>

# M-CRANE 1030 RT



## Static Diagrams - lbs / ft

Static diagram from +10° up to -3° long./ ±5° lat.



Static diagram from -3° up to -10° long./ ±5° lat.

