

T-CRANE

CRAWLER TELESCOPIC BOOM CRANE

1060



 **MultiLoaderUSA**

T-CRANE 1060

CRANE

SELF-PROPELLED
SELF-LEVELLING

The first pick&carry mini crane with self-levelling technology.

Highly flexible, T-Crane 1060 can be used in variety of lifting situations from internal to outdoor lifting, on slopes and uneven terrain up to 22°.

Equipped with our innovative levelling technology, the T-Crane 1060 easily travels and carries loads up to 1950lbs, featuring a 25'3" lifting height with a 20' maximum working radius.

MODE

WORKING DIAGRAMS

AUTO

STATIC

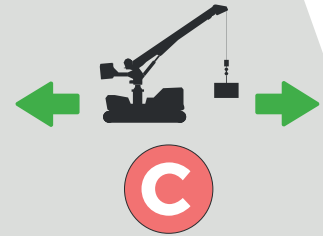


Maximum lifting performance

DRIVING



Automatic self-propelled function based on load and outreach



Only working diagram of 1950 lbs (with counterweight)



Radio console by AUTEK

25'3"
moving
height

DYNAMIC LEVELLING

15° LONGITUDINAL
15° LATERAL



Technical data

| | |
|--|------------------|
| Max lifting height | 25'3" |
| Max moving height | 25'3" |
| Rotation angle | +/- 110° |
| Max working radius | 20' x 990 lbs |
| Max. crane capacity | 1950 lbs x 11'6" |
| Pick and carry capacity | 1950 lbs |
| Length in stowed position with counterweight | 14'2" |
| Length in stowed position without counterweight | 13'10" |
| Min width in stowed position | 4'5" |
| Max working width | 8' |
| Min height in stowed position | 6'3" |
| Longitudinal leveling | +/- 15° |
| Lateral leveling | +/- 15° |
| Max gradeability | 25° |
| Max drive slope | 25° |
| Drive speed (fast) | 1.56 mph |
| Security speed | 0.18 mph |
| Length of winch cable | 98' |

Weights

| | EVO | LTH |
|--|----------|----------|
| Total weight with counterweight | 8470 lbs | 8602 lbs |
| Ground Pressure with counterweight | 0.52 psi | 0.53 psi |
| Total weight without counterweight | 6270 lbs | 6410 lbs |
| Ground Pressure without counterweight | 0.38 psi | 0.39 psi |

Power

| | | |
|-----------------|---|---|
| Engine | 3TNM68 Yanmar engine (diesel) 17Hp | Lithium battery pack 300Ah-48V DC 4 kW |
| Battery Charger | - | N°2 20A-48V |

T-CRANE 1060

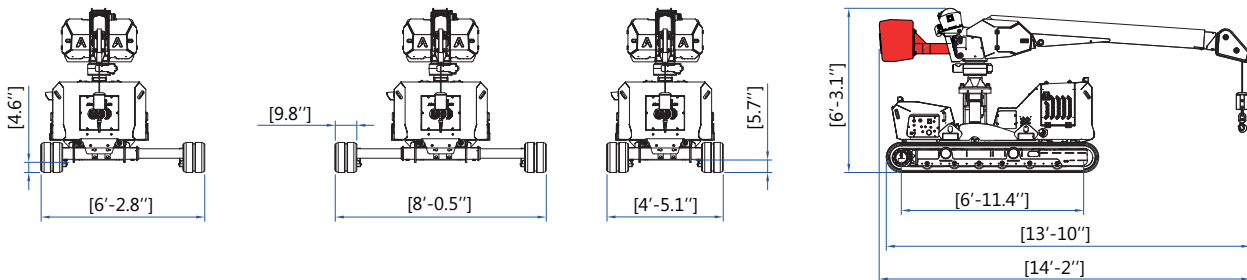
Extras - On Demand

- Non-marking tracks
- Electric pump 220V 2,2kW
- Lubricant kit for arctic climate



Simplify and centralize the management of all after-sales activities, spare parts purchasing and warranty procedures.

**MYALMAC
CONTROL
PANEL**

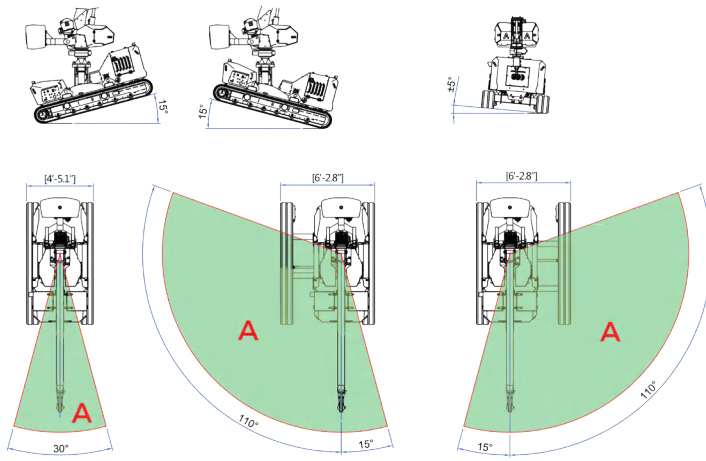


REMOVABLE COUNTERWEIGHT

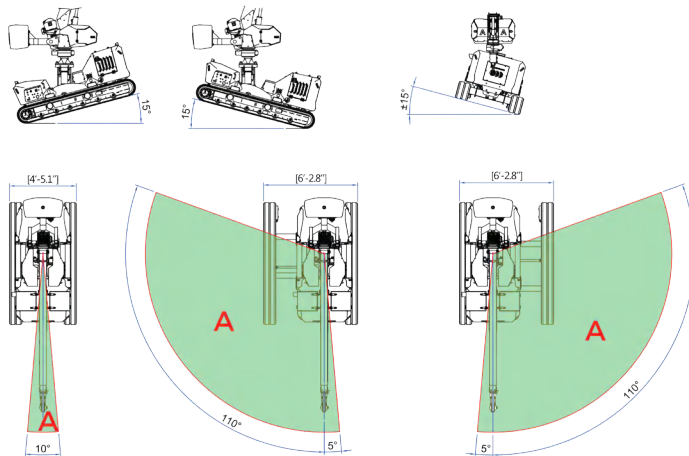
Lowers the overall weight to 4870 lbs for easy transportation



Static working diagrams

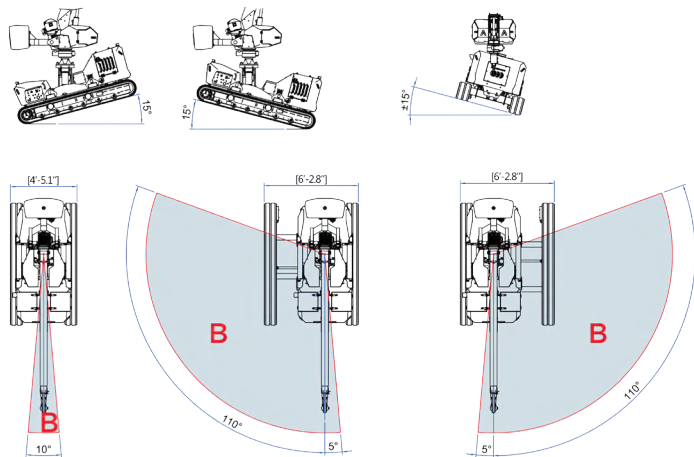


+/- 15° longitudinal inclination
+/- 5° lateral inclination

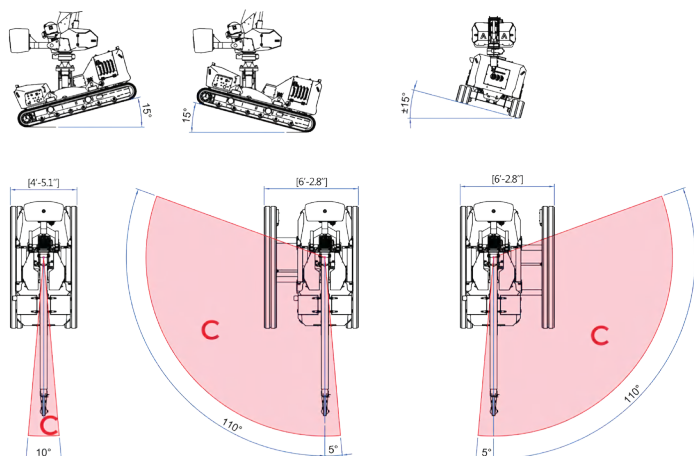


+/- 15° longitudinal inclination
+/- 15° lateral inclination

Driving working diagrams



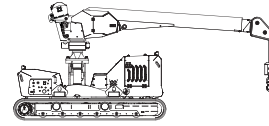
+/- 15° longitudinal inclination
+/- 15° lateral inclination



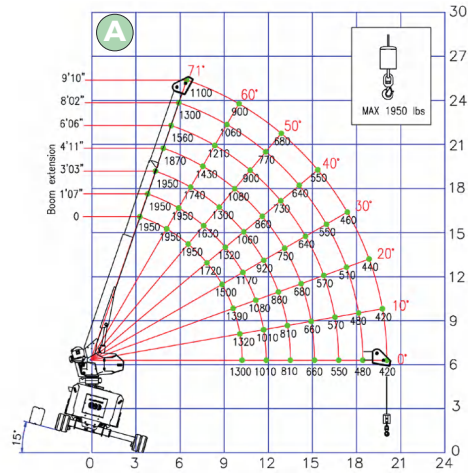
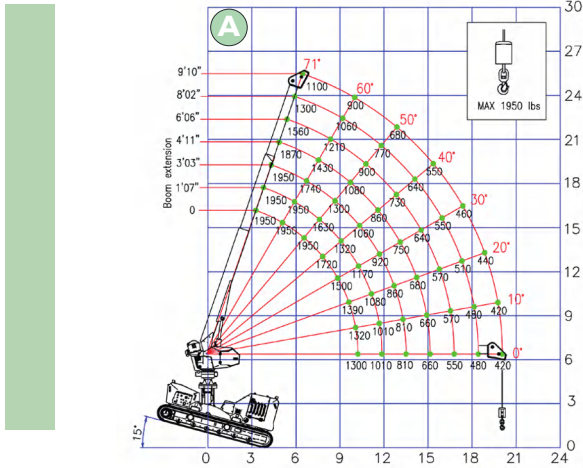
+/- 15° longitudinal inclination
+/- 15° lateral inclination

T-CRANE 1060

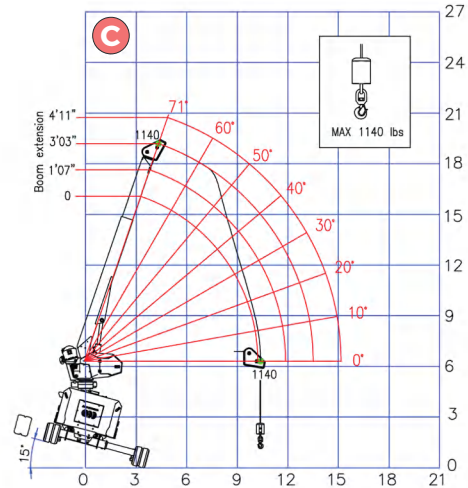
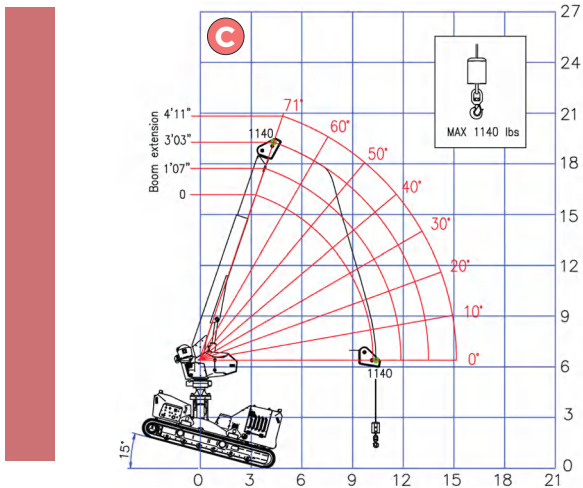
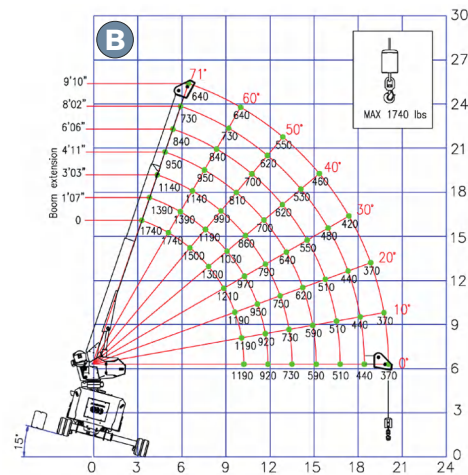
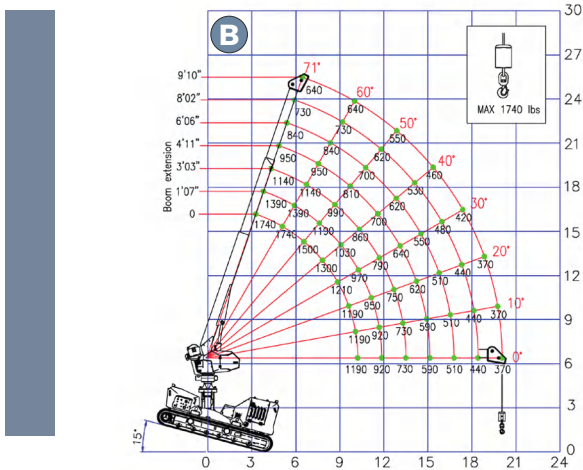
Working diagrams **without** counterweight



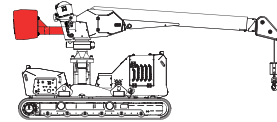
Static working diagrams



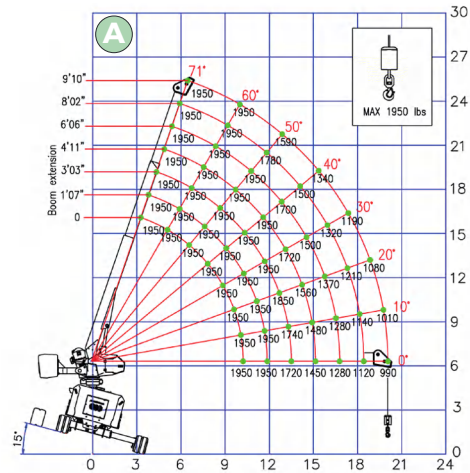
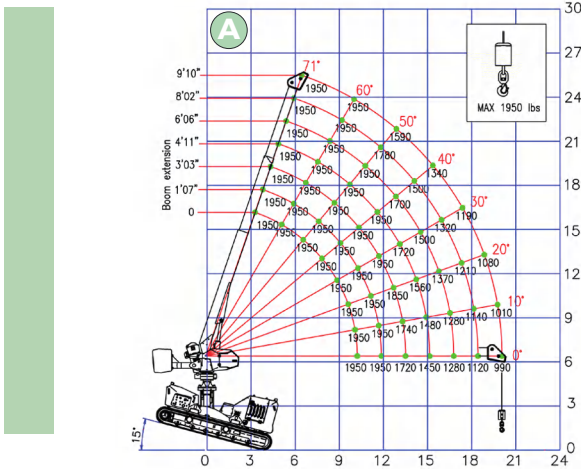
Driving working diagrams



Working diagrams with counterweight



Static working diagrams



Driving working diagrams

